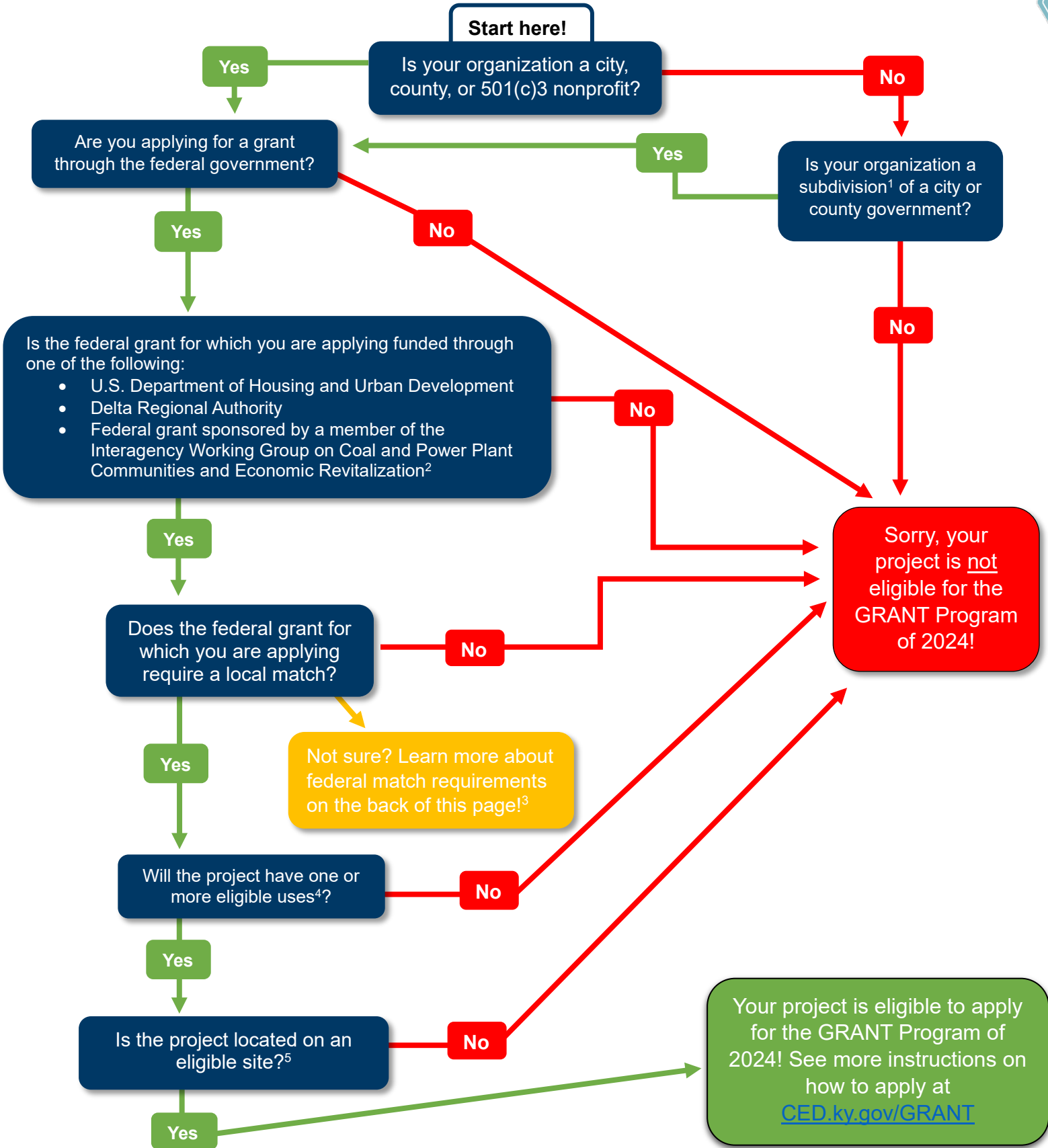


ARE YOU ELIGIBLE FOR THE GRANT PROGRAM OF 2024?





FLOWCHART KEY

1. What does it mean to be a “subdivision” of a city or county government?

- The GRANT Program of 2024 has recently expanded the eligibility requirements to include sub-organizations of city and county governments. In order to qualify, entities must provide documentation of the KRS statute that authorizes the creation of the entity under the city or county government.

2. Members of the Interagency Working Group on Coal and Power Plant Communities and Economic Revitalization

- Office of Management and Budget
- U.S. Department of Energy
- U.S. Department of Treasury
- U.S. Department of the Interior
- U.S. Department of Agriculture
- U.S. Department of Commerce
- U.S. Department of Labor
- U.S. Department of Health and Human Services
- U.S. Department of Transportation
- U.S. Department of Education
- U.S. Environmental Protection Agency
- Appalachian Regional Commission

3. In regard to Federal Grant Applications, what does “local match requirement” mean?

- A local match requirement for a federal grant is the requirement that funds in addition to the federal grant be provided to fund part of the project. For the purposes of federal grants, local matches can come from the state government, local governments, companies, organizations, utilities, non-profits, and in-kind services/materials. The GRANT Program of 2024 was created to provide match funding to cities, counties, and 501(c)3 nonprofits around Kentucky to remove barriers to accessing federal grant funds that require match funding. Match requirements by federal grant sponsors should not be confused with the local match requirement of the GRANT Program of 2024, which requires GRANT applicants to contribute a percentage of funds to the projects.

4. Eligible Project Uses for the GRANT Program of 2024

- Enhance economic vitality, including revitalization of structures with a public purpose or benefit
- Promote or develop an artistic or philanthropic purpose
- Improve traditional infrastructure, such as water and wastewater treatment facilities, transmission lines, transportation facilities and flood and wastewater management
- Create or enhance telecommunications infrastructure, including cellular towers, fiber optic expansion, and technology infrastructure
- Promote agricultural activities and development
- Enhance development of previously mined areas or areas previously used by the coal industry and other industrial activities into uses that diversify the local economy
- Create or expand recreational facilities, such as walking, hiking, all-terrain vehicle, bike trails, picnic facilities, restrooms, boat docking and fishing piers, and athletic facilities
- Acquire private property that promotes local economic vitality and housing development and enhancements
- Preserve or enhance buildings that are of local historic or economic interest
- Restore or create retail facilities, including related service, parking, and transportation facilities, to revitalize decaying downtown areas
- Construct or expand other facilities that promote or enhance economic development or tourism opportunities, thereby promoting the general welfare of local residents
- Provide facilities and activities for local residents that enhance quality of life, including but not limited to childcare access and public transportation
- Other eligible uses as determined

5. Projects are eligible when they are initiated on one of the following:

- Publicly owned property
- Legally binding letter of intent or option for the sale to an Eligible Grant Recipient
- Legally binding sale agreement for the sale to an Eligible Grant Recipient
- Private property on which a project is located that is in the public interest, for a public purpose and benefits an eligible community.